

1 System requirements (minimum)

Operating system	Windows 2000 SP4, Windows XP Professional SP2, Windows Vista
RAM	1 GB (Windows 2000 / Windows XP) 2 GB (Windows Vista)
Memory	Program: 1 GB Data: 2 GB (for about 3000 determinations)
Serial ports	for devices with RS-232 interface
USB ports	for devices with USB interface

The windows user must have administrator rights in order to be able to install the **MagIC Net** software.

Additional requirements for the **MagIC Net server**:

Network	10 MBit/s, stable and permanent Communication via TCP/IP
Operating system	Windows 2000 SP4, Windows XP Professional SP2, Windows 2000 Server, Windows 2003 Server, Windows Vista



Caution

During a determination data loss may occur when the PC switches over to the standby mode. In the energy settings of the operating system the **standby mode** should therefore be **deactivated**.

2 Single workplace installation

With the single workplace version **MagIC Net Basic**, **MagIC Net Compact** or **MagIC Net Professional** the MagIC Net client as well as the server will be installed on your computer.

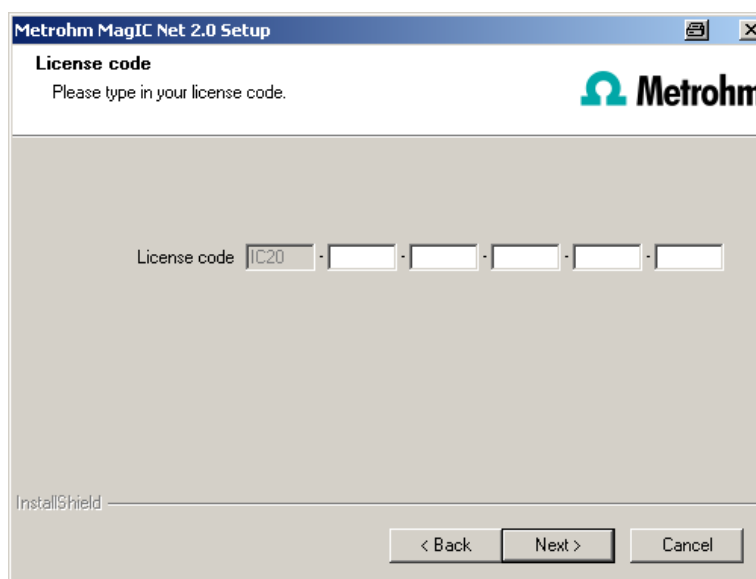
- 1 On inserting the CD into the drive of your computer the installation will be started automatically. If this option is deactivated on your computer, double click the file **setup.exe**.

If the minimum system requirements are not met (see above) a message appears. Click on **[Yes]** if you like to install the program nevertheless.

Afterwards, click on **[Next]**.

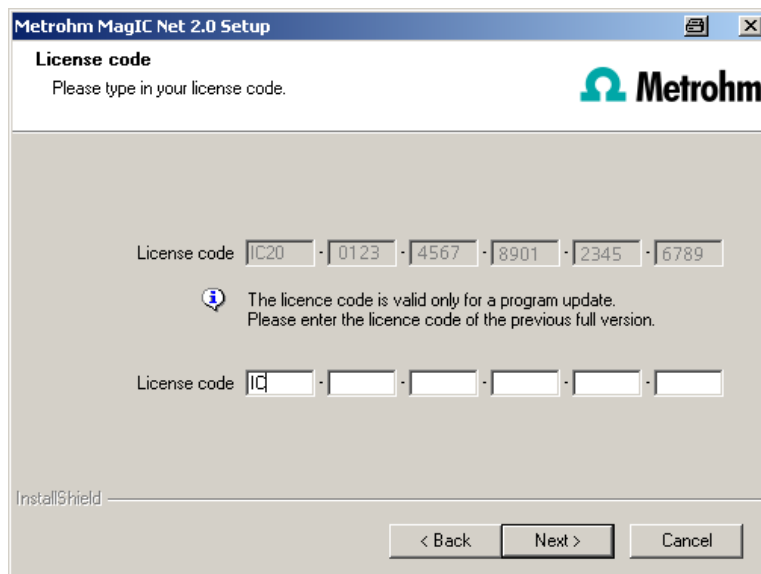
- 2 After having read the license agreement for **MagIC Net** and accepting it with **[Yes]** a window will appear where you can enter the license code.

- 3 Enter the license code for **MagIC Net Basic**, **MagIC Net Compact** or **MagIC Net Professional** and click on **[Next]**.

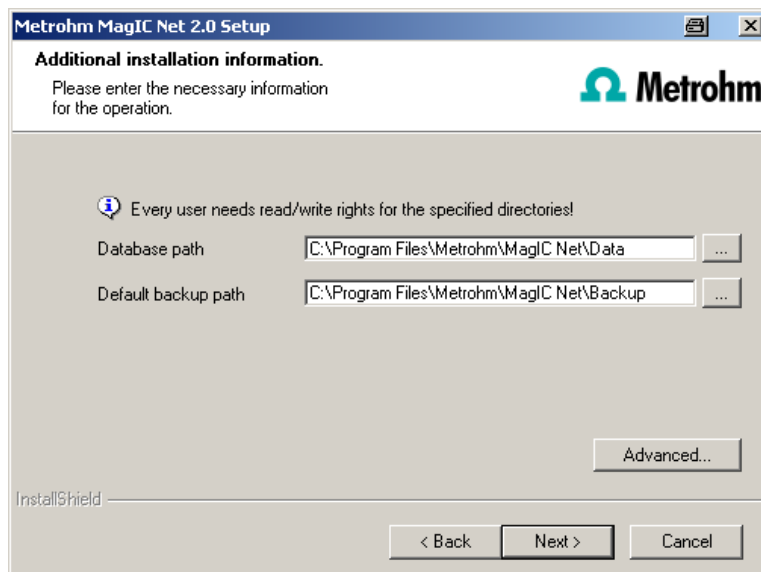


Note

If you have entered the license code of an update license, then the license code of the previous full version will additionally be requested.



- 4 Now enter the target folder for the **MagIC Net** installation and confirm with **[Next]**.
- 5 In the dialog window **Additional installation information** you can define the paths for the database and backup files:

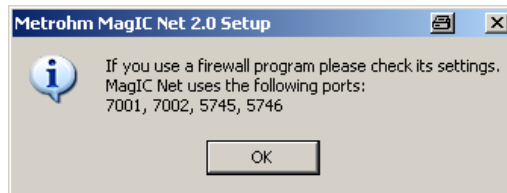


Note

The default paths differ in Windows Vista and Windows 2000 or Windows XP.

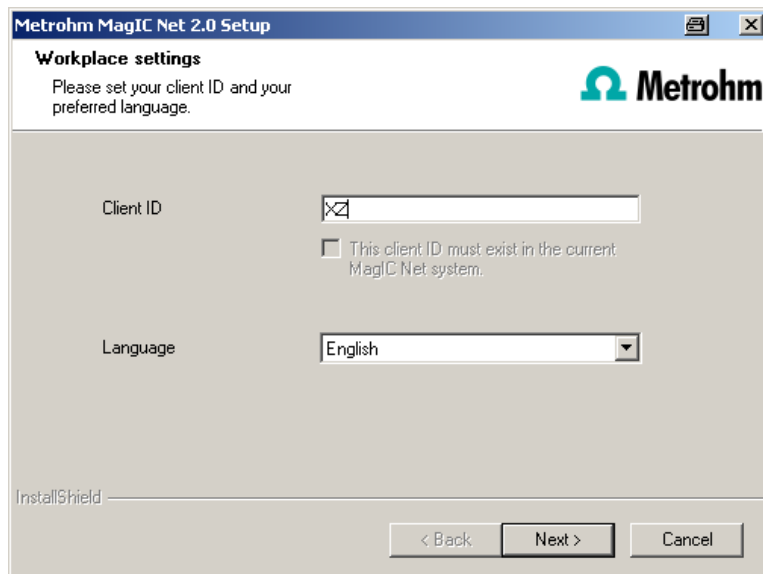
Under **[Advanced...]** it is possible to change the ports **MagIC Net** uses to communicate with the database and administration server. If the ports are used already, an appropriate error message will appear. Ask your system administrator for more information about this. Continue with **[Next]**.

- 6 Follow the instructions of the program until the following message appears:



This message points out which ports **MagIC Net** uses. Write down these ports and inform your system administrator in case **MagIC Net** is not able to connect to the database. Confirm the message with **[OK]**.

- 7 As soon as the copying procedure has been terminated you can set further workplace settings:



The option "**The client ID must exist in the current MagIC Net system**" is only selectable, if a database from a previous installation exists on your computer or if you want to connect to a database server which has already been installed on another computer.

If you activate this option **MagIC Net** checks whether the identifier you have entered exists in the database. If this is true the identifier and all associated settings will be adopted. With this option a renewed installation of a client is much easier.

Click on **[Next]**. If the database ports are not available, an appropriate error message will appear and the installation will be canceled. In this case, check your server and firewall settings before installing the program again.

- 8 At the end of the installation the file **info.txt** will be created which contains all relevant information concerning your current **MagIC Net** installation. Save this file on your hard disk in case of need in future and print it (add to IQ). Complete the installation with **[Finish]**.

An **InstallLog** file with a list of all files having been copied to your computer and with a confirmation for a successful installation is saved in the **MagIC Net** installation folder (default: C:\Program Files\Metrohm \MagIC Net) under bin\InstallLog.

3 Client/Server installation

With the **MagIC Net Multi** version (multiple workplace version with 3 licenses) you can select during the installation whether you want to install a MagIC Net **client** or the MagIC Net **client** plus **server** on your computer.

If you only want to install a MagIC Net client on your computer, in advance a server the client will be connected to must have been installed on another computer.

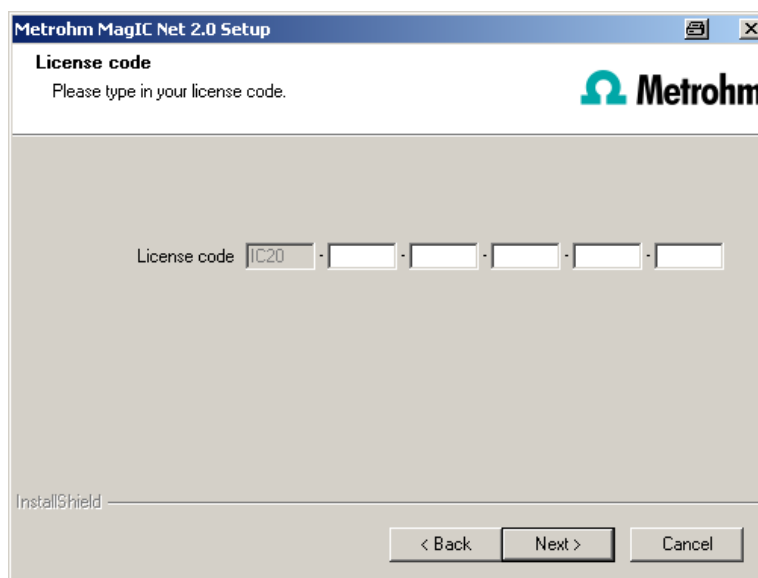
- 1 On inserting the CD into the drive of your computer the installation will be started automatically. If this option is deactivated on your computer, double click the file **setup.exe**.

If the minimum system requirements are not met (see above) a message appears. Click on **[Yes]** if you like to install the program nevertheless.

Afterwards, click on **[Next]**.

- 2 After having read the license agreement for **MagIC Net** and accepting it with **[Yes]** a window will appear where you can enter the license code.

- 3 Enter the license code for **MagIC Net Multi** and click on **[Next]**.

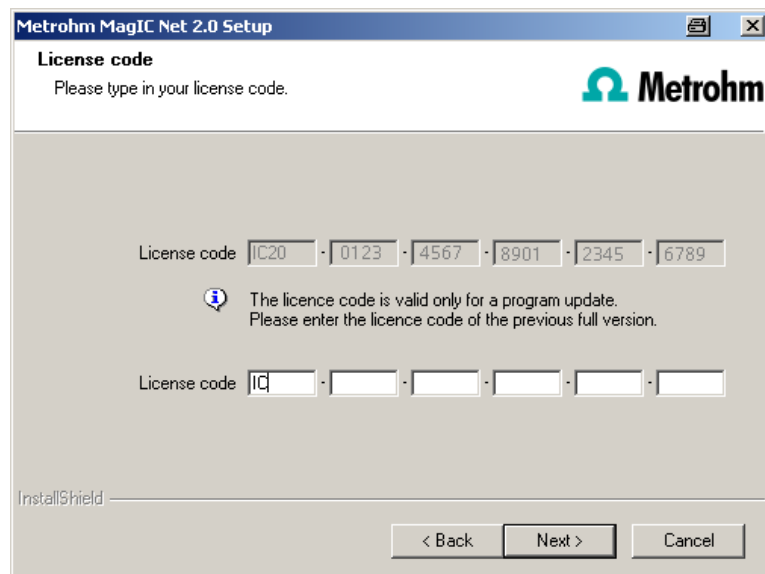


The screenshot shows the 'Metrohm MagIC Net 2.0 Setup' window. The title bar is blue with the text 'Metrohm MagIC Net 2.0 Setup'. Below the title bar, the text 'License code' is displayed, followed by 'Please type in your license code.' The Metrohm logo is in the top right corner. The main area contains a 'License code' label followed by a series of input fields: 'IC20', a hyphen, an empty box, a hyphen, an empty box, a hyphen, an empty box, a hyphen, an empty box, and a hyphen, an empty box. At the bottom, there are three buttons: '< Back', 'Next >', and 'Cancel'. The 'InstallShield' logo is visible in the bottom left corner.

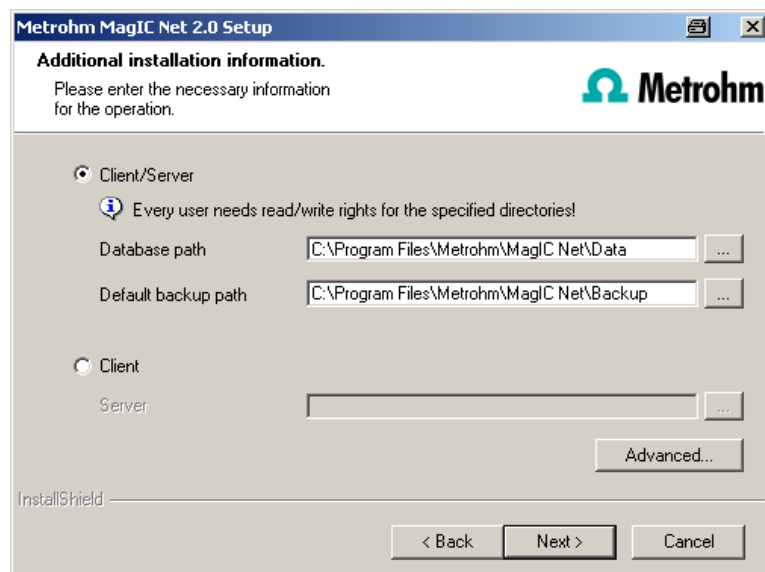


Note


If you have entered the license code of an update license, then the license code of the previous full version will additionally be requested.



- 4 Now enter the target folder for the **MagIC Net** installation and confirm with **[Next]**.
- 5 The dialog window **Additional installation information** appears where you can choose whether you want to install a **client** or the **server**:



The option **workplace** installs the client and the **database server** on your computer. Choose this option if your computer will be used as server.

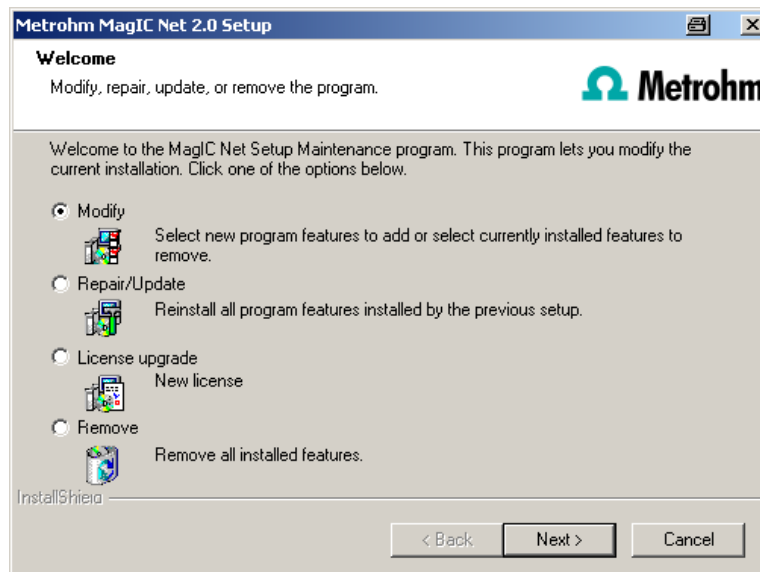
With **Client** only the **workplace** will be installed and with  you have to choose the database server (has to be installed in advance!) to which you want to connect. The network server name or the IP address are accepted.

Under **[Advanced...]** it is possible to change the ports **MagIC Net** uses to communicate with the database and administration server. If the ports are used already, an appropriate error message will appear. Ask your system administrator for more information about this. Continue with **[Next]**.

- 6 All further installation steps correspond to those of the single workplace installation on from **point 6**.

4 Modify / repair / remove installation and upgrade license

In order to carry out modifications on the current **MagIC Net** installation start the file **setup.exe** on the installation CD or click on **Metrohm MagIC Net** under **Control Panel ► Software**. Then select **Change/Remove**:



Modify

With this option you can change the paths to the database and backup files and set the ports which **MagIC Net** uses for communication. With the **MagIC Net Multi** version you can additionally change the path to the database server.

If the database path is changed, the existing databases are automatically copied to the new location.

Repair/Update

With this option you can **repair** an existing defective installation or **update** an older installation.

■ Repair installation

In case of a defective **MagIC Net** installation because e.g. a DLL file is missing or a program file has been deleted by mistake, **MagIC Net** can be repaired with this option.

■ Update installation

In case an older version of **MagIC Net** is installed, it will be updated to the new version of **MagIC Net**, see *Program update with MagIC Net Compact/ Professional* or *Program update with MagIC Net Multi*.



Caution

During updating older MagIC Net versions to MagIC Net 2.x the databases will be converted to the new version. Depending on the size of the database, this can take some time. For each database a progress bar is displayed which informs about the status of the conversion.

The computer or Windows must not be restarted or shut down as long as the conversion runs!

License upgrade

A direct upgrade of your current installation to a **MagIC Net** version with additional features is possible. The following upgrade paths are possible:

- **MagIC Net Compact** to **MagIC Net Professional** or **MagIC Net Multi**
- **MagIC Net Professional** to **MagIC Net Multi**

In order to do this enter your new license code in the next dialog window.

Remove

This option removes your **MagIC Net** installation. Data which has been generated after the installation (e.g. database entries, log files, exported data etc.) will remain on your hard disk.

5 Program update with MagIC Net Compact/Professional

During the program update, the configuration database (system configuration, methods, templates) and the determination databases are automatically updated for further use with **MagIC Net Compact/Professional**.



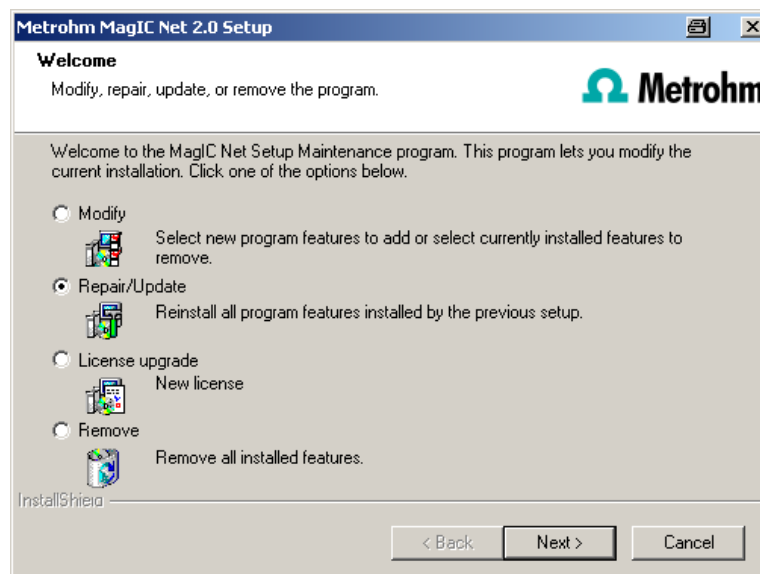
Note

The files in the database and backup directory will be retained when updating the program.

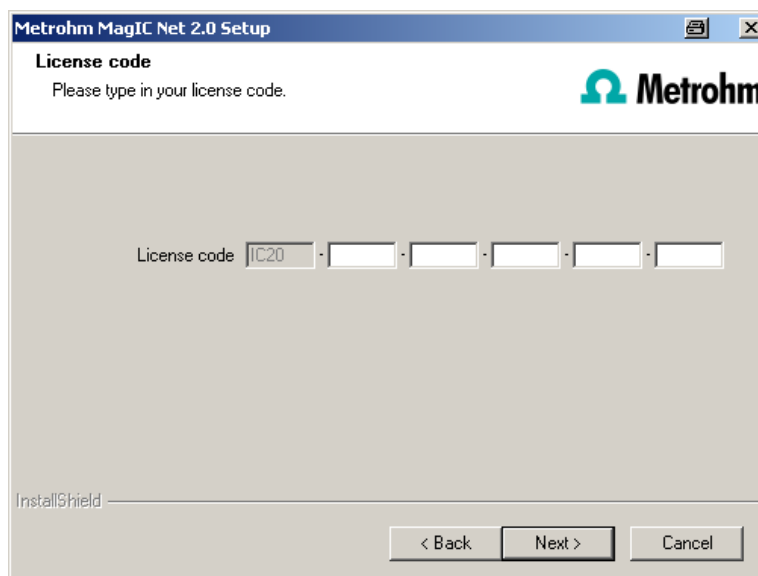
Files in the subdirectories **bin**, **jre**, **lib**, **res**, **doc** and **examples** will be overwritten by the update. The files in these directories not having been overwritten by the update will be deleted. The deleted files are listed in the **InstallLog**.

- 1 Save the configuration database into an external directory using the backup function of **MagIC Net**. In the program part **Configuration**, select the menu item **File ► Save ► Manually**. Select the **Backup directory**, enter a name for the backup file and click on **[Start]**. The backup is carried out automatically. It is recommended to copy the backup file to CD/DVD.

- 2 If desired, export the methods in addition to the automatic backup with the configuration database (see above) into an external directory. In the program part **Method**, select the menu item **File ► Method manager...** Select the desired **Method group**, mark all methods to be exported and click on **[Edit] ► Export....** Select the desired export directory and click on **[OK]**. The methods are exported into the desired directory. It is recommended to copy the exported methods to CD/DVD.
- 3 Save all determination databases created by yourself into an external directory using the backup function of **MagIC Net**. In the program part **Database**, select the menu item **File ► Database manager....** Select the desired database and click on **[Backup]**. Select the **Backup directory**, enter a name for the backup file and click on **[Start]**. The backup is carried out automatically. It is recommended to copy the backup file to CD/DVD.
- 4 Save further files created by yourself in the installation directory (e.g. export files) into an external directory or to CD/DVD.
- 5 Close **MagIC Net**. Insert the installation CD and double click the file **setup.exe**. Then select **Repair/Update** and click on **[Next]**.



- 6 Enter the update license code for **MagIC Net Compact** or **MagIC Net Professional** and click on **[Next]**.



7



Caution

During updating older MagIC Net versions to MagIC Net 2.x the databases will be converted to the new version. Depending on the size of the database, this can take some time. For each database a progress bar is displayed which informs about the status of the conversion.

The computer or Windows must not be restarted or shut down as long as the conversion runs!

Complete the installation with **[Finish]**.

An **UpdateLog** file with a list of all files having been copied to your computer and with a confirmation for a successful installation is saved in the **MagIC Net** installation folder (default: C:\Program Files\Metrohm \MagIC Net) under bin\InstallLog.

6 Program update with MagIC Net Multi

At the program update, the configuration database (system configuration, methods, templates, user-specific data for all clients) and the determination databases on the server are automatically updated for further use with **MagIC Net Multi**.



Note

The files in the database and backup directory will be retained when updating the program.

Files in the subdirectories **bin**, **jre**, **lib**, **res**, **doc** and **examples** will be overwritten by the update. The files in these directories not having been overwritten by the update will be deleted. The deleted files are listed in the **InstallLog**.

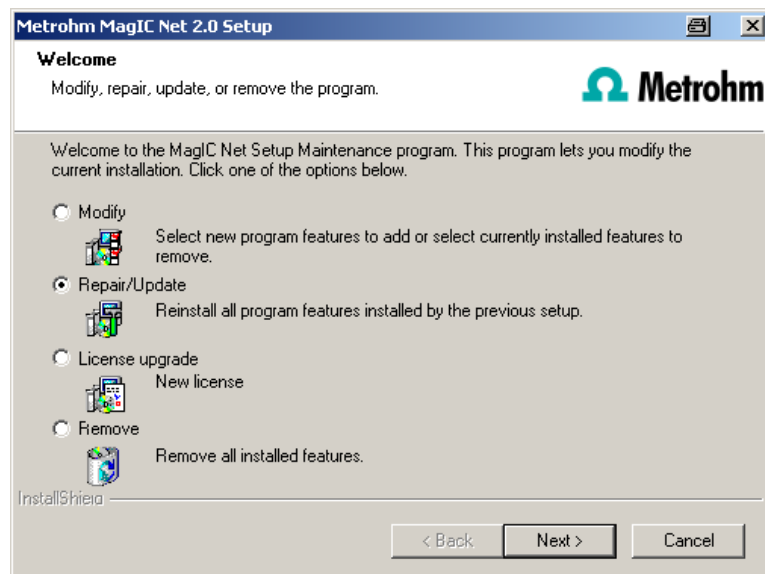
- 1 Make sure **MagIC Net Multi** is closed on all clients.



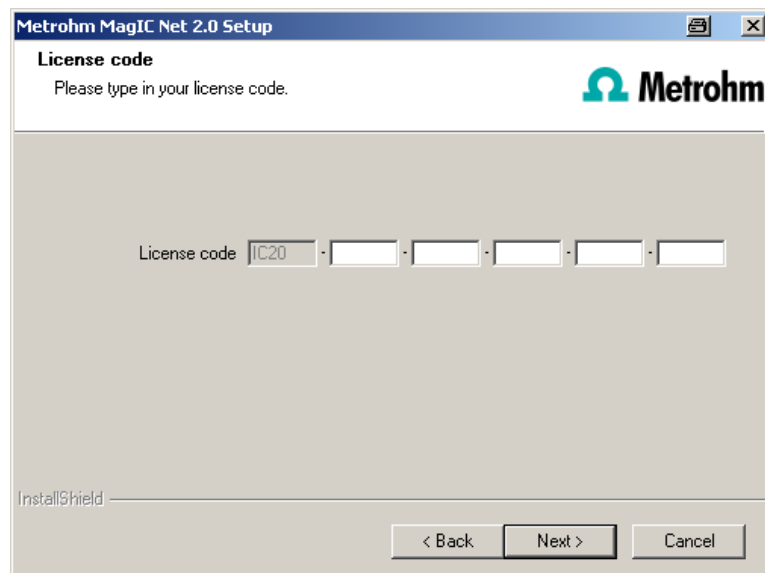
Note

In the subdirectory **bin** of the **MagIC Net** installation there is the application **Clients.exe** with which all clients and their status can be displayed.

- 2 Open **MagIC Net Multi** on the server and save the configuration database into an external directory using the backup function of **MagIC Net**. In the program part **Configuration**, select the menu item **File ► Save ► Manually**. Select the **Backup directory**, enter a name for the backup file and click on **[Start]**. The backup is carried out automatically. It is recommended to copy the backup file to CD/DVD.
- 3 If desired, export the methods in addition to the automatic backup with the configuration database (see above) into an external directory. In the program part **Method**, select the menu item **File ► Method manager....** Select the desired **Method group**, mark all methods to be exported and click on **[Edit] ► Export....** Select the desired export directory and click on **[OK]**. The methods are exported into the desired directory. It is recommended to copy the exported methods to CD/DVD.
- 4 Save all determination databases on the server into an external directory using the backup function of **MagIC Net**. In the program part **Database**, select the menu item **File ► Database manager....** Select the desired database and click on **[Backup]**. Select the **Backup directory**, enter a name for the backup file and click on **[Start]**. The backup is carried out automatically. It is recommended to copy the backup file to CD/DVD.
- 5 Save further files in the installation directory (e.g. export files) into an external directory or to CD/DVD.
- 6 **Update server**
Close **MagIC Net Multi** on the server and on all clients. Insert the installation CD on the **server** and double click the file **setup.exe**. Then select **Repair/Update** and click on **[Next]**.



- 7 Enter the update license code for **MagIC Net Multi** and click on **[Next]**.



8



Note

The update of **MagIC Net Multi** consists of the server license and three client licenses. If an existing installation contains additional licenses, these will be deleted.

Click on **[OK]** in the corresponding message in order to continue the installation.

9



Caution

During updating older MagIC Net versions to MagIC Net 2.x the databases will be converted to the new version. Depending on the size of the database, this can take some time. For each database a progress bar is displayed which informs about the status of the conversion.

The computer or Windows must not be restarted or shut down as long as the conversion runs!

Complete the installation with **[Finish]**.

An **UpdateLog** file with a list of all files having been copied to the server and with a confirmation for a successful installation is saved in the **MagIC Net** installation folder (default: C:\Program Files\Metrohm\MagIC Net) under bin\InstallLog.

- 10** In case additional licenses have been removed during the server update, or if further additional licenses are to be added, the **Administrator** can enter them in **MagIC Net** (dialog: **Configuration ► Tools ► Program administration ► Licenses ► Add licenses**).

11 Update clients

For each client, insert the installation CD and double click the file **setup.exe**. Then select **Repair/Update** and click on **[Next]**. Complete the installation with **[Finish]**.



Note

In order to facilitate updating many clients, the installation can be copied from the CD to a writeable medium and the file **magic_init.ini** can be modified. There, user-defined parameters (license code, installation path, server name, ...) for the installation can be set in order one will only have to click through the installation.

An **UpdateLog** file with a list of all files having been copied to the client computer and with a confirmation for a successful installation is saved in the **MagIC Net** installation folder (default: C:\Program Files\Metrohm\MagIC Net) under bin\InstallLog.